

4.12 PUBLIC PARKS AND RECREATION

This section analyzes and discusses the potential impacts to parks and recreational facilities due to the Proposed Project at Gness Field Airport (DVO or Airport).

4.12.1 ENVIRONMENTAL SETTING

4.12.1.1 Existing Conditions

There are no public parks or recreation facilities located within the Detailed Study Area. There are 11 public parks/recreational facilities and open space preserves located partially or wholly within the General Study Area (GSA), as listed below and shown in **Exhibit 4.12-1, Public Parks and Recreational Facilities**. The facilities and preserves located within the GSA fall under the jurisdiction of the State of California, Marin County, and the city of Novato, as listed below.

- Park/Recreational Facility
 - Rancho Olompali State Historic Park, State of California
 - Hamman Field, city of Novato, California
 - Slade Park, city of Novato, California
 - Pansy Tong Lo Park, city of Novato, California
 - Bahia Mini Parks (3 sites), city of Novato, California
 - Black Point Boat Launch, Marin County, California
- Open Space Preserve
 - Mount Burdell, Marin County, California
 - Rush Creek, Marin County, California
 - Deer Island, Marin County, California

4.12.2 ENVIRONMENTAL IMPACTS AND MITIGATION

4.12.2.1 Significance Criteria

According to Appendix G of the California Environmental Quality Act, a project would generally have a significant effect on mineral resources if it would:

- a) Increase the use of existing neighborhood and regional parks or other recreational facilities such that substantial physical deterioration of the facility would occur or be accelerated; or
- b) Include recreational facilities or require the construction or expansion of recreational facilities which might have an adverse physical effect on the environment.

In addition to the above listed criteria from Appendix G, Marin County has established criteria for significance thresholds in its Environmental Impact Report Guidelines.¹ The discussion of these thresholds in relation to recreational facilities is addressed in Section 4.2, *Land Use and Planning*.

4.12.2.2 Environmental Impacts of the Proposed Project

Impact 4.12-1: The Proposed Project would not increase the use of public parks or recreational facilities (less than significant).

The Proposed Project would not increase the number of residents using the existing public parks and recreational facilities. Since the Proposed Project would not increase the number of aircraft operations at the Airport, the Proposed Project would not increase the number of people utilizing nearby parks and recreational facilities. Therefore, the Proposed Project would not increase the use of existing neighborhood and regional parks or other recreational facilities such that substantial physical deterioration of the facility would occur or be accelerated.

Mitigation: None required.

Impact 4.12-2: The Proposed Project would not create new or expand existing recreational facilities (less than significant).

The Proposed Project does not include any plans for creating new or expanding existing recreational facilities in the area. Nor would the proposed project increase the demand for recreational facilities. There is no real nexus between airport operations and the need for parks and other recreational facilities. According, the proposed project is expected to have a less than significant impact on the need for new or expanded recreation facilities.

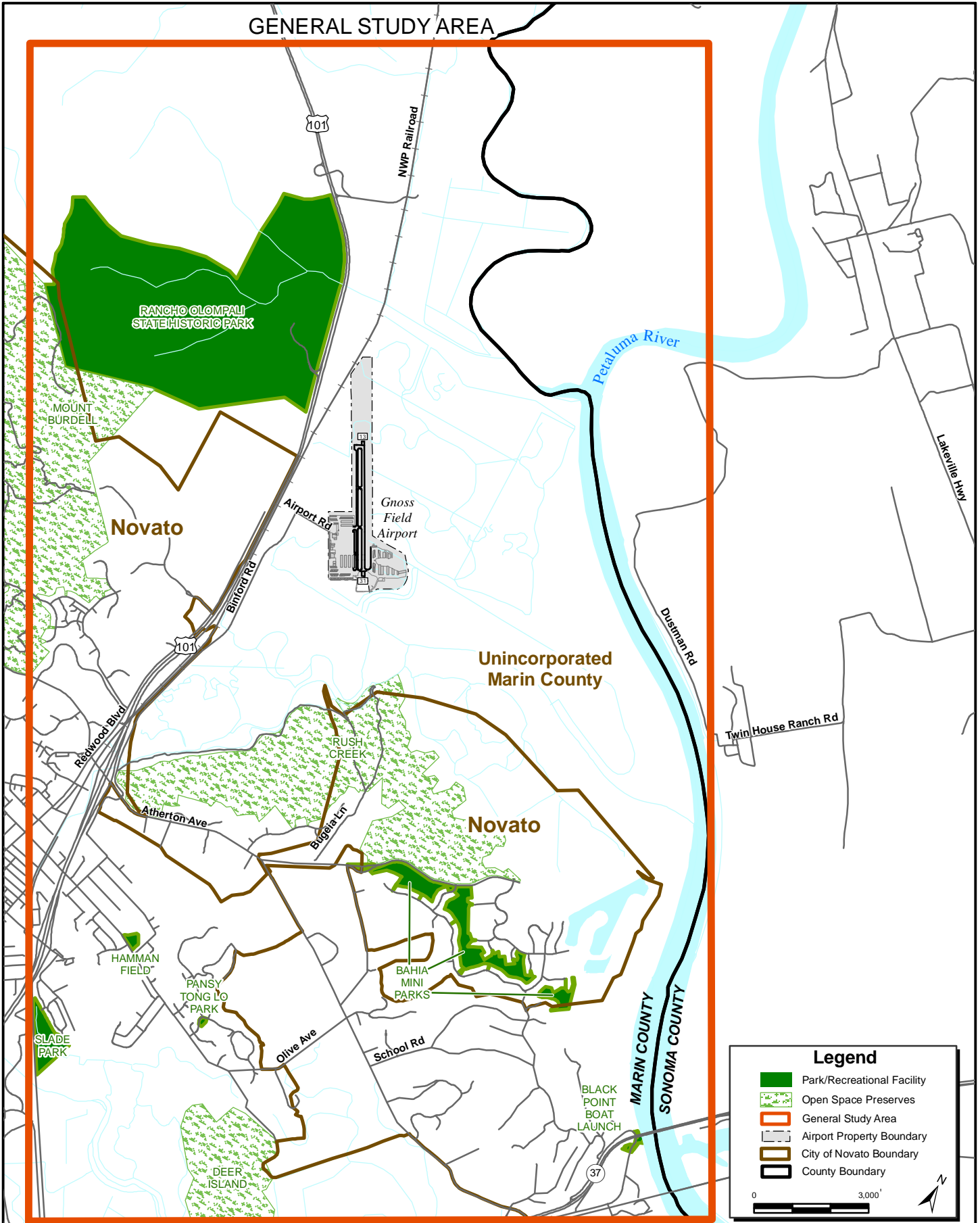
Mitigation: None required.

4.12.3 CUMULATIVE IMPACTS OF THE PROPOSED PROJECT

Due to the fact that the Proposed Project would not increase the use of public parks or recreational facilities, nor would it create new or expand existing recreational facilities, it can be concluded that the Proposed Project would not cause any cumulative or long-term impacts to public parks or recreational facilities.

¹ Marin County Community Development Agency. Environmental Impact Review (EIR) Guidelines Policy and Procedures for Implementation of the California Environmental Quality Act (CEQA). Adopted May 17, 1994 Marin County Board of Supervisors.

GENERAL STUDY AREA



Legend

- Park/Recreational Facility
- Open Space Preserves
- General Study Area
- Airport Property Boundary
- City of Novato Boundary
- County Boundary

0 3,000'

